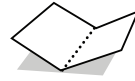




Dashed lines are
hill folds



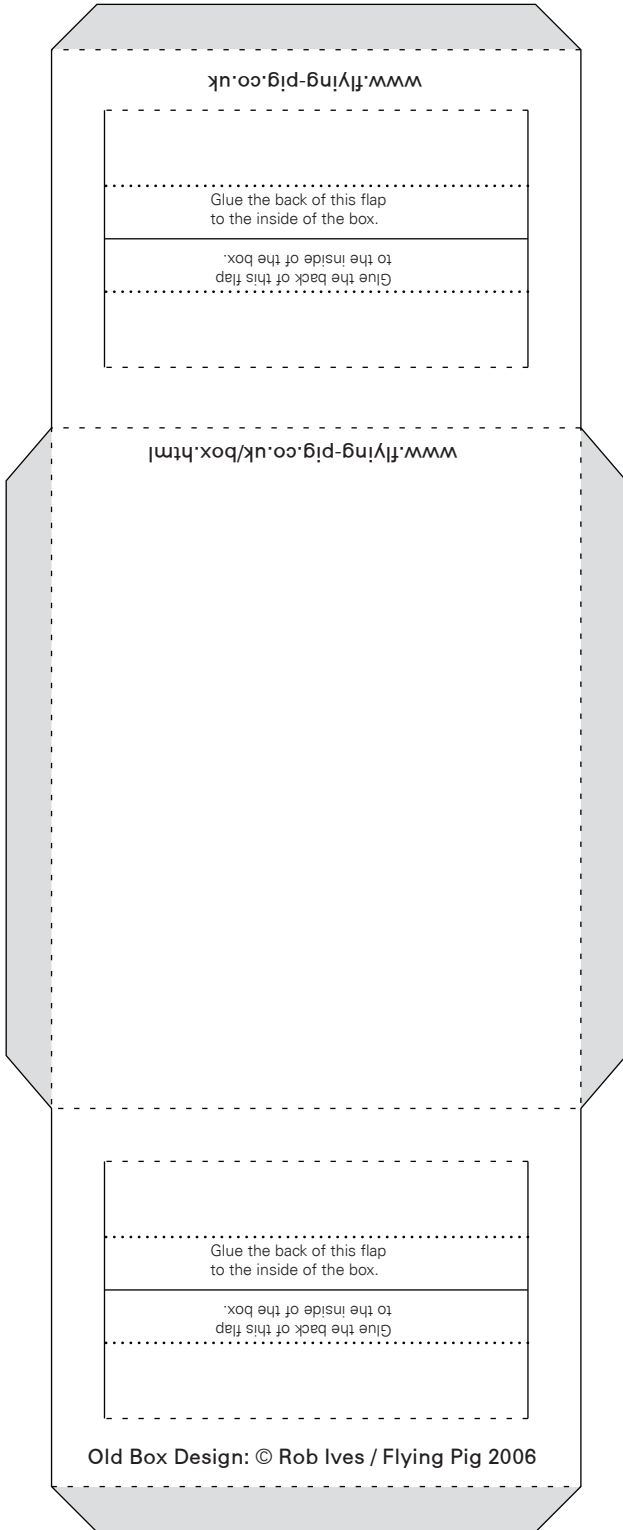
Dotted lines are
valley folds



Black lines show
where to cut.



Shaded areas show
where to glue.



www.flying-pig.co.uk

Glue the back of this flap
to the inside of the box.

Glue the back of this flap
to the inside of the box.

www.flying-pig.co.uk/box.html

Glue the back of this flap
to the inside of the box.

Glue the back of this flap
to the inside of the box.

Old Box Design: © Rob Ives / Flying Pig 2006

