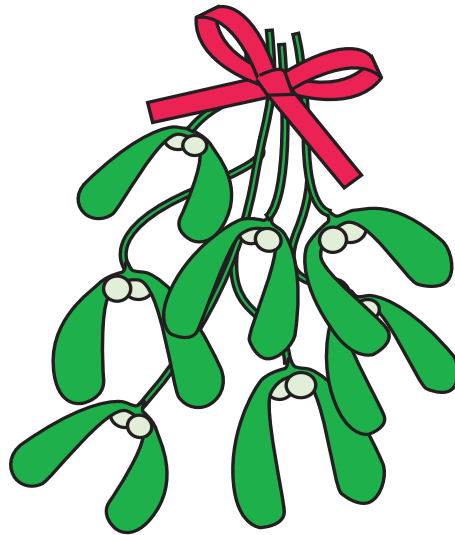


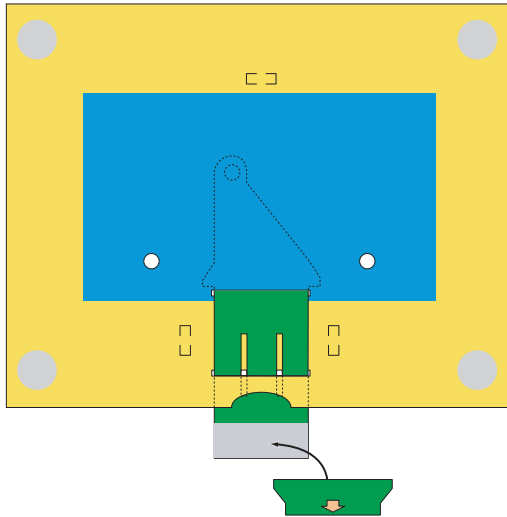
# *Christmas Kiss*

*An animated picture for you to make.*



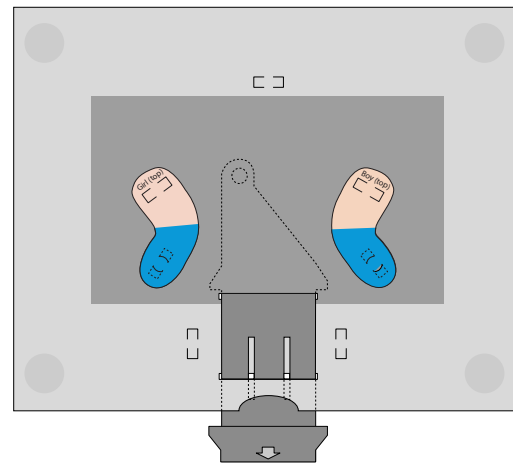
General Instructions.

Print the three part sheets onto 230 micron card. Carefully cut out all the holes and score along the dotted lines, then cut out all the pieces

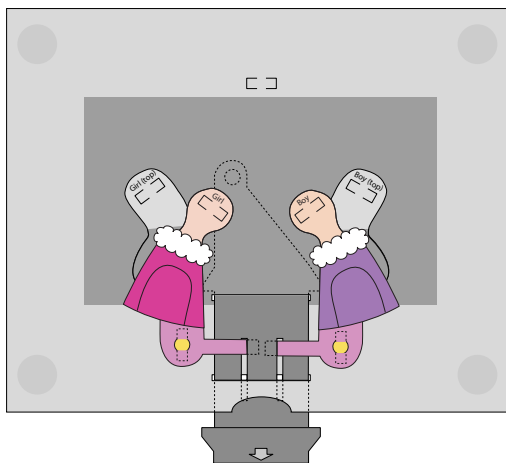


Thread the green pull slide into place and glue on the end

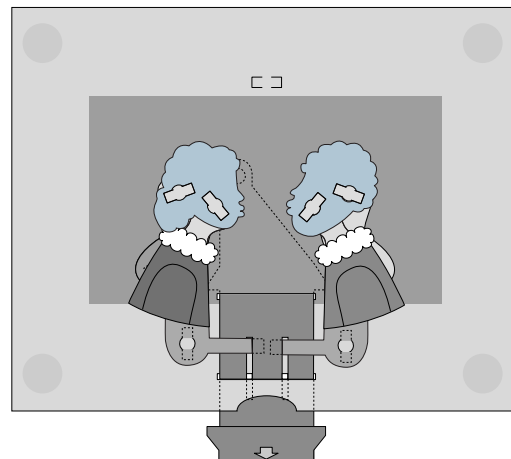
Fit the two back linkages into place by threading the tabs through the hole in the backboard then flattening out the tabs. Do not glue! These parts must be free to move!

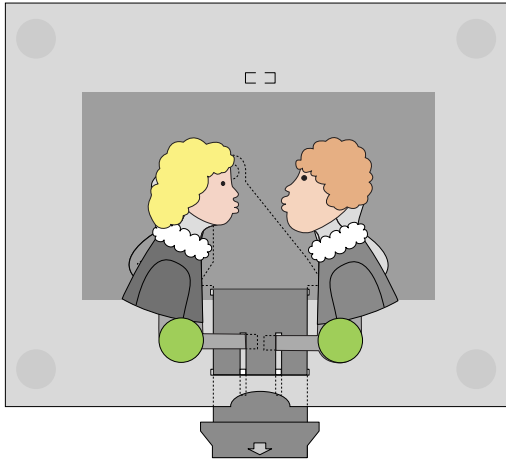


Fold round and glue the lever on the front linkages. Thread the ends of the front linkages into the pull slide as shown. Fit the front linkage into place using the tabs. Again, do not glue!



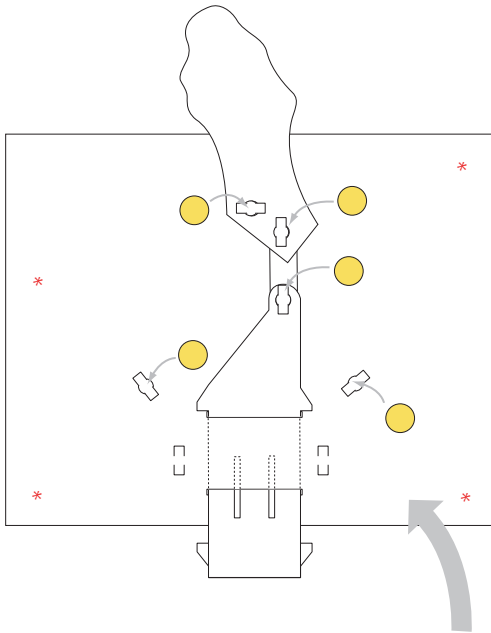
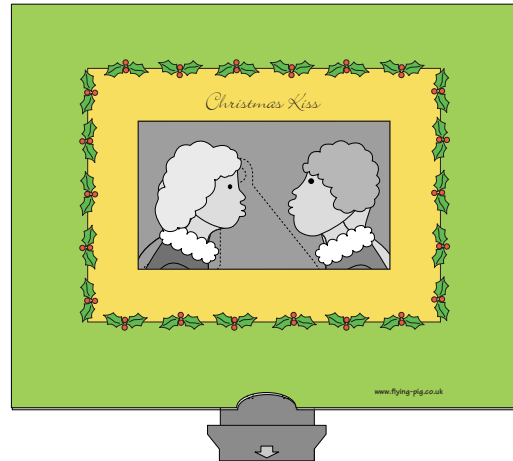
Use the tabs on the linkages to fit the head backs into place. No glue!



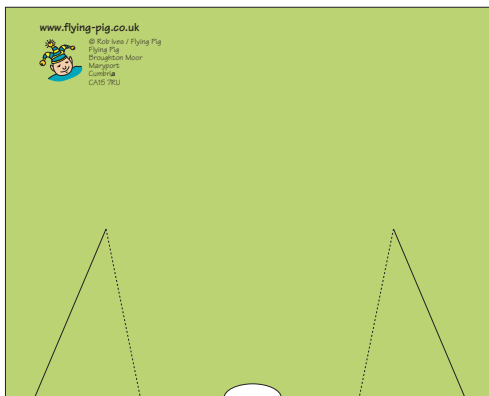


Glue the head fronts into place making sure that the glue is nowhere near the tabs.  
Glue the green washers on, this time make sure the glue is only on the tabs!

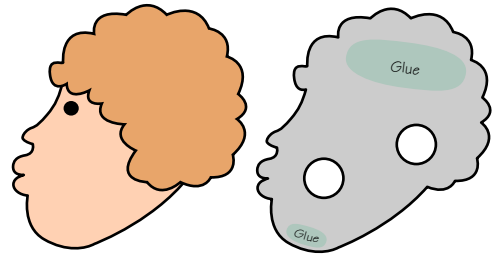
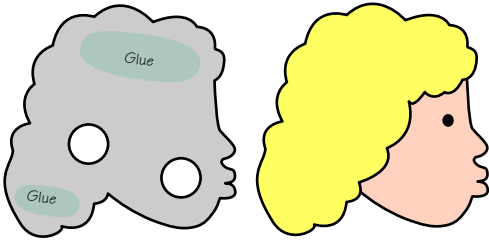
Glue the front cover into place making sure that glue is only in the marked areas. Pull the pull slide and see if the model works.



Turn the card round. Fit the mistletoe in place and join it to the pull slide with the linkage.  
Glue the yellow washers into place. Make sure the glue is only on the tabs so all the parts move freely.



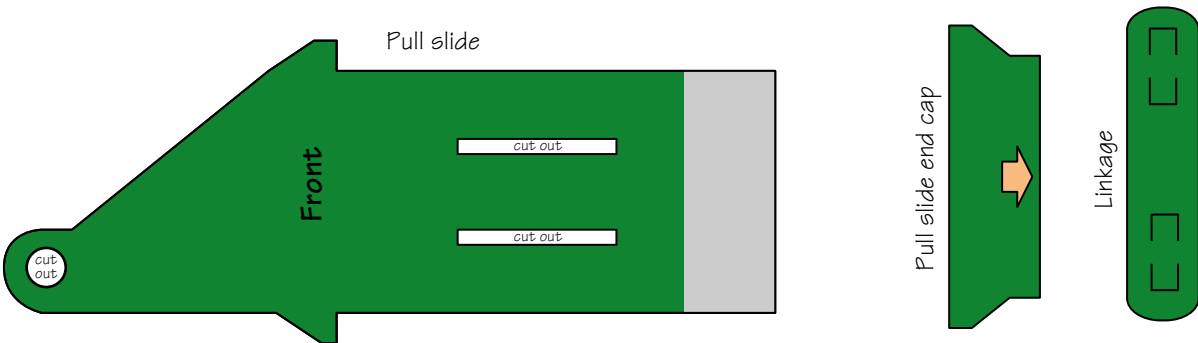
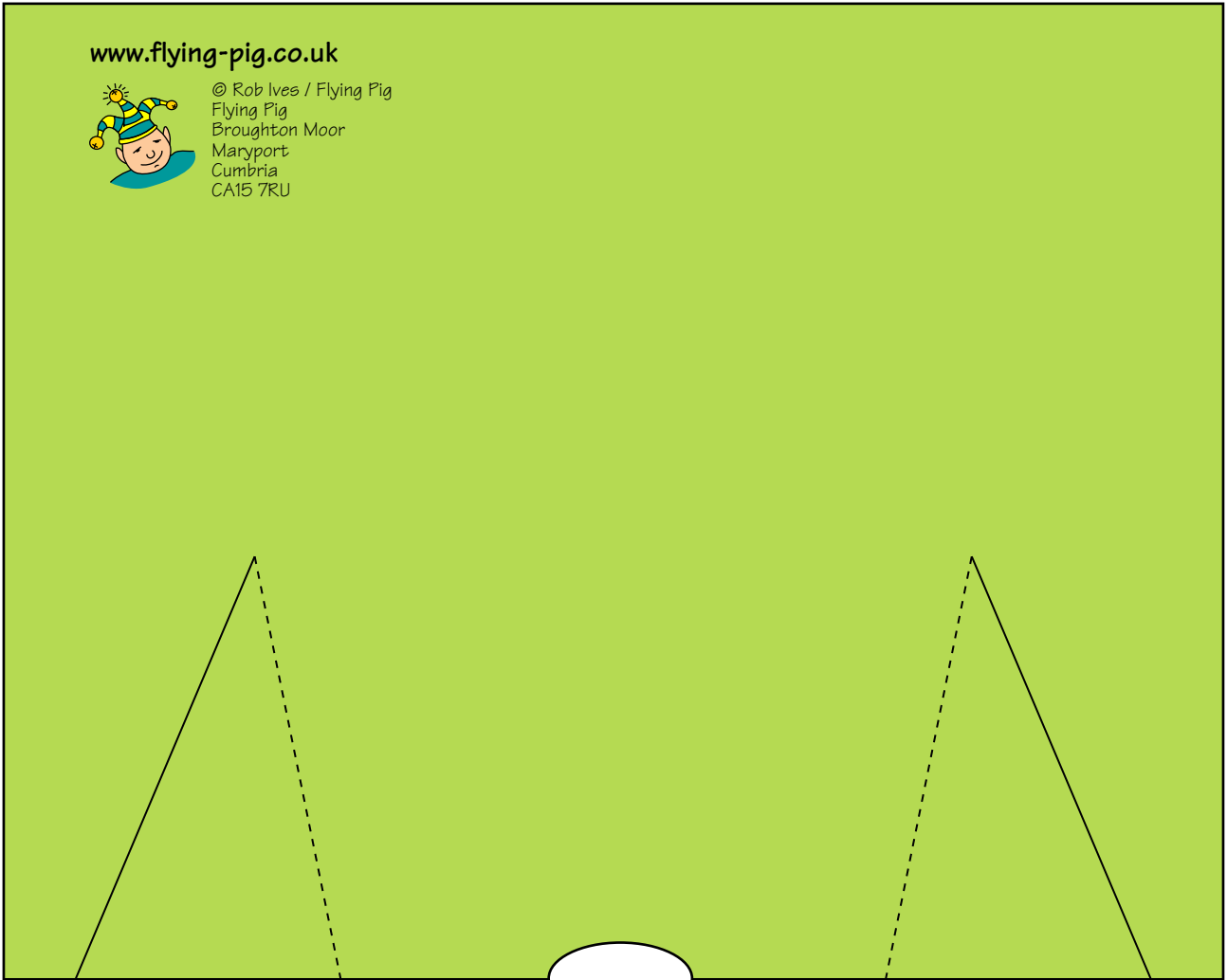
Glue the back of the card into place. Use small amounts of glue only where the stars (\*) are on this diagram.

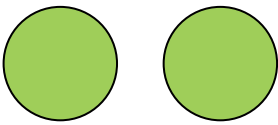


[www.flying-pig.co.uk](http://www.flying-pig.co.uk)



© Rob Ives / Flying Pig  
 Flying Pig  
 Broughton Moor  
 Maryport  
 Cumbria  
 CA15 7RU





Washers



